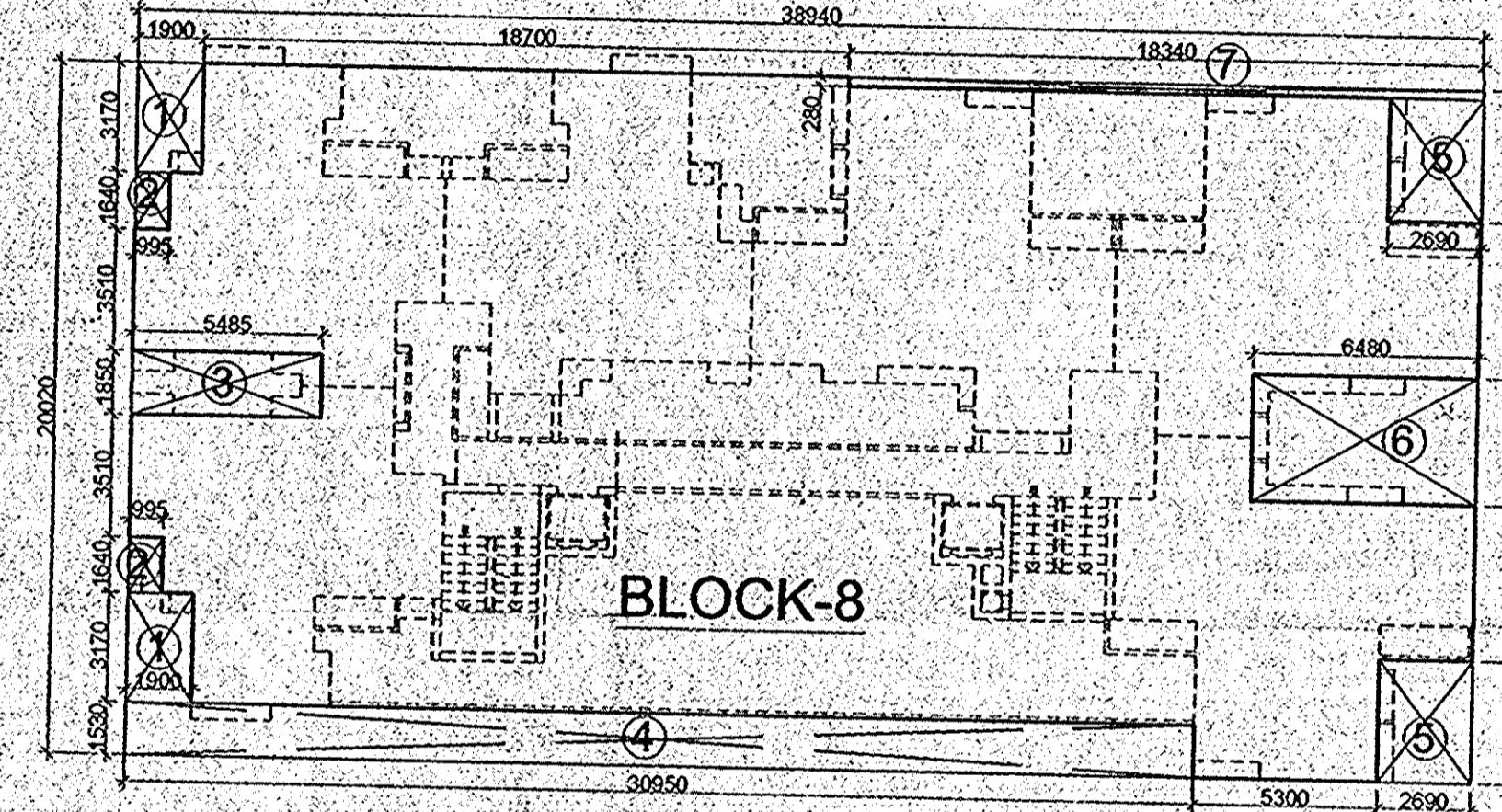
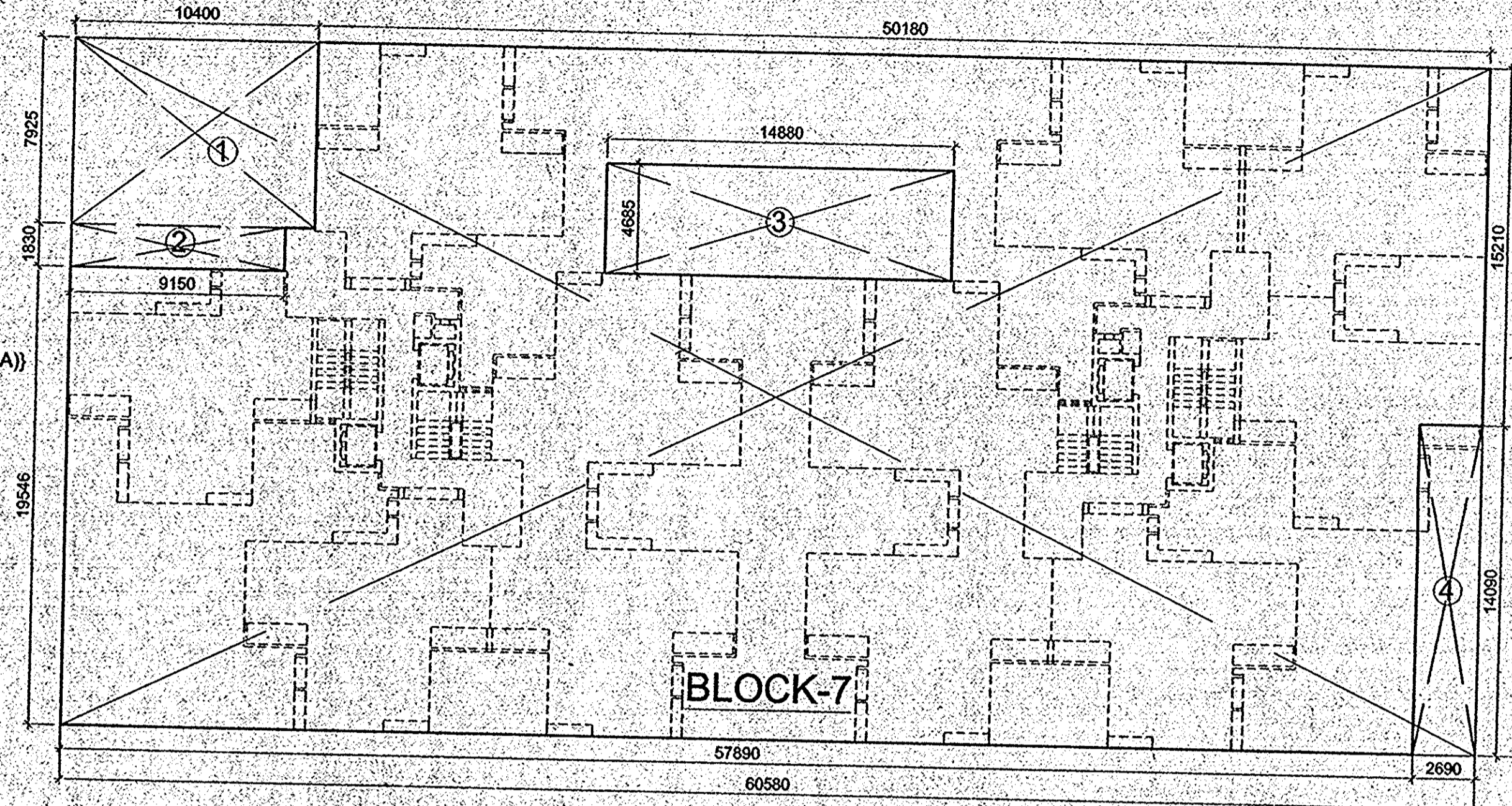


GROUND COVERAGE DETAIL BLK-5 & 6

GROUND COVERAGE DETAIL BLK-7
 GROUND COVERAGE DETAIL BLK-7
 GROUND COVERAGE
 C = 60,580 X 29,300 = 1774.994 SQM
LESS AREA DETAIL
 1 = 10,400 X 7,925 = 82,420 SQM
 2 = 9,150 X 1,830 = 16,744 SQM
 3 = 14,880 X 4,685 = 69,712 SQM
 4 = 2,690 X 14,090 = 37,902 SQM
TOTAL = 206,778 SQM
NET GROUND COVERAGE = ((TOTAL COVERAGE) - (LESS AREA))
 = 1774.994 - 206.778 = 1568.216 SQM

GROUND COVERAGE DETAIL BLK-5 & 6
 GROUND COVERAGE
 B = 43,425 X 46,910 = 2037.066 SQM.
LESS AREA DETAIL
 1 = 22,785 X 4,340 = 98,886 SQM.
 2 = 7,990 X 12,160 = 97,158 SQM.
 3 = 5,025 X 18,710 = 94,017 SQM.
TOTAL = 343,087 SQM.
NET GROUND COVERAGE = TOTAL COVERAGE (-) LESS AREA
 = 2037.066 - 290.061 = 1747.005 SQM
TOTAL GROUND COVERAGE = BLK-5 & 6
 = 1747.005 X 2 = 3494.010 SQM

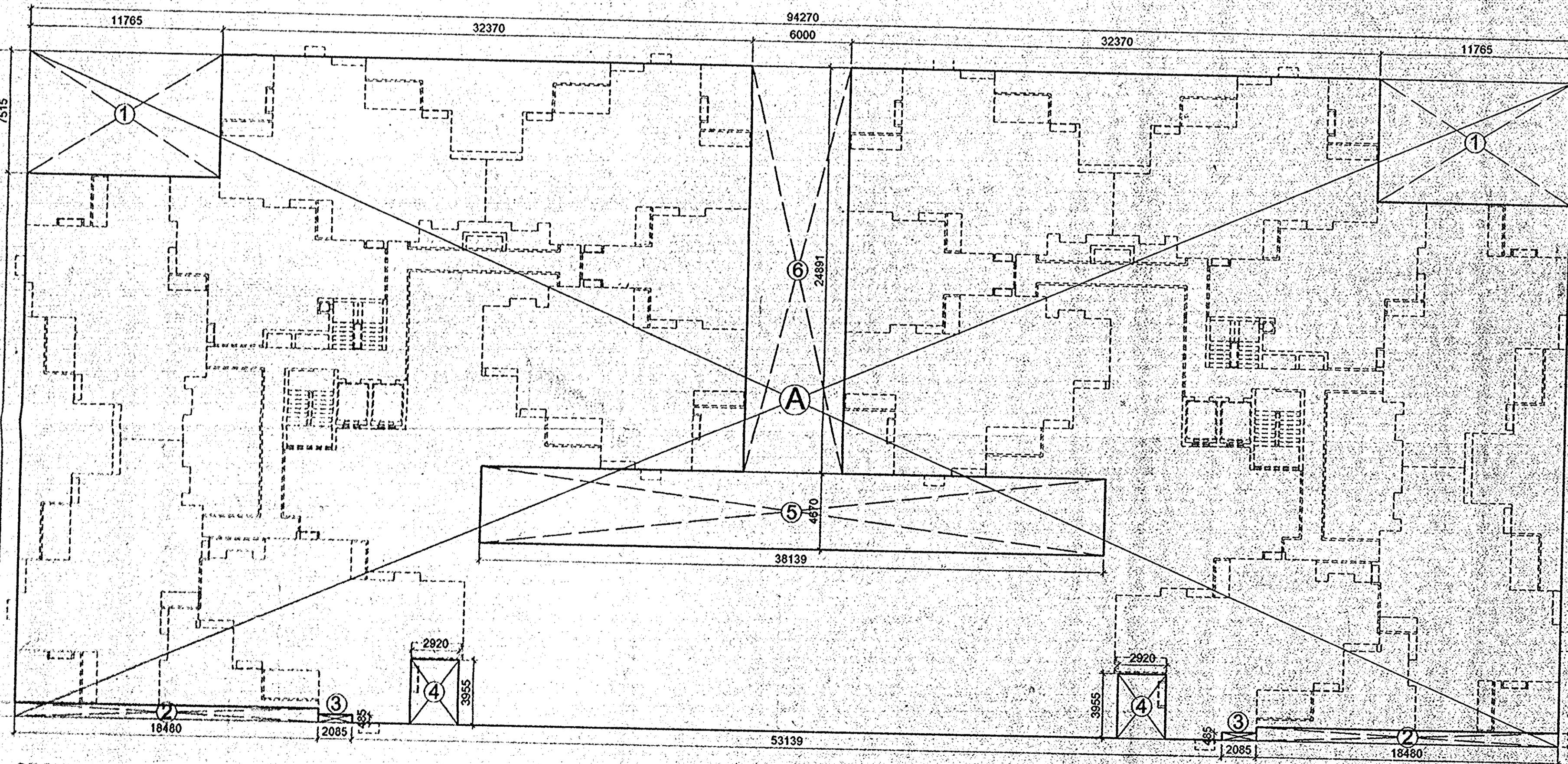


GROUND COVERAGE DETAIL BLK-8
 GROUND COVERAGE DETAIL BLK-8
 GROUND COVERAGE
 D = 38,940 X 20,020 = 779.578 SQM.
LESS AREA DETAIL
 1 = 1,900 X 3,170 X 2 = 12,046 SQM.
 2 = 0,995 X 1,640 X 2 = 3,263 SQM.
 3 = 5,485 X 1,850 = 10,147 SQM.
 4 = 30,950 X 1,530 = 47,353 SQM.
 5 = 2,690 X 3,530 X 2 = 18,991 SQM.
 6 = 6,480 X 3,660 = 23,716 SQM.
 7 = 18,340 X 0,280 = 5,135 SQM.
TOTAL = 120,651 SQM.
NET GROUND COVERAGE = ((TOTAL COVERAGE) - (LESS AREA))
 = 779.578 - 120.651 = 658.927 SQM

GROUND COVERAGE DETAIL BLOCK-1,2 & 3,4
 TOTAL BLOCK AREA
 A = 94,270 X 40,725 = 3839,145 SQM.
LESS AREA
 1 = (11,765 X 7,515) 2 = 176,827 SQM.
 2 = (18,480 X 0,840) 2 = 31,046 SQM.
 3 = (2,085 X 0,485) 2 = 2,022 SQM.
 4 = (2,920 X 3,955) 2 = 23,097 SQM.
 5 = 38,139 X 4,670 = 178,109 SQM.
 6 = 6,000 X 24,891 = 149,346 SQM.
TOTAL = 560,447 SQM.

BLK-1&2 AREA = 3839.145 (-) 560.447 = 3278.698 SQM.
TOTAL AREA OF BLK-1,2&3,4 = 3278.698 X 2 = 6557.396 SQM.

TOTAL GROUND COVERAGE ALL BLOCKS
 BLOCK-1 & 2 = 3278.698 SQM
 BLOCK-3 & 4 = 3278.698 SQM
 BLOCK-5 = 1747.005 SQM
 BLOCK-6 = 1747.005 SQM
 BLOCK-7 = 1568.216 SQM
 BLOCK-8 = 658.927 SQM
 CLUB = 867.757 SQM
 CLUB = 13146.306 SQM



GROUND COVERAGE DETAIL BLK-1&2, 3&4

मानचित्र सं. 1094/09
 धारा 1094/09
 दिनांक 28-11-19
 1743
 28-11-19
 01/11/19
 01/11/19
 मानचित्र सं. 1094/09
 धारा 1094/09
 दिनांक 28-11-19
 1743
 28-11-19
 01/11/19
 01/11/19

OWNERS SIGN: (Sd/- Director (Works)) Director (Works) Air Force Station, Race Course New Delhi - 110013		
ARCHITECTS SIGN: Garg & Associates 46, Regal Building, Connaught Place, New Delhi-110001		
CLIENT		
ARCHITECTS: GARG & ASSOCIATES ARCHITECTS, ENGINEERS, PLANNERS 46, REGAL BUILDING, CONN PLACE NEW DELHI: 110001. PHONE: 011-23742808 / 23742509		
PROPOSED GROUP HOUSING FOR AIR FORCE NAVAL HOUSING BOARD AT PLOT NO. - SECTOR 4 B PART MEERUT		
SHEET TITLE SUBMISSION DRG. GROUND COVERAGE DETAIL (BLOCK-1 TO 8)		
DATE	DEALT BY	NORTH
CKD. BY	SCALE	
DRG. NO	1:200	
		04